

Assistive Technology

Assistive technology is the term used to describe any online or physical aid that can help your learning. There are assistive technologies available in each of the Libraries. Please see the **Assistive Technology Guide** or ask staff about;

- Footrests
- Ergonomic mouse mats and wrist rests
- Headphones (for College work)
- Portable Loop Induction
- Coloured paper and reading rulers
- AccessApps – applications to help you use a computer



IntelliKeys Keyboard

For those with learning, motor-skill, low vision or cognitive difficulties, IntelliKeys specially designed overlays can be operated with a finger, foot or even nose or chin.



Contrast Keyboard

We have high quality black or white keyboards with large contrasting letters. The letters are up to 400% bigger than a standard keyboard.



Merlin Desktop Magnifier

Merlin is a full-colour, auto-focus, desktop video magnifier. The high quality screen outputs a magnified version of textbooks or anything you place on the magnifier.



Ergonomically Designed Adjustable Chair

Chairs are available that offer greater posture support, easily adjusted for use by different people.



Height Adjustable Desk

Height adjustable desks are available at most Libraries and Learning Centres, better suiting individual needs.



Track Ball Mouse

A track ball only needs a light touch to move the cursor and works for both left and right handed users. It can help those with limited movement or repetitive strains.

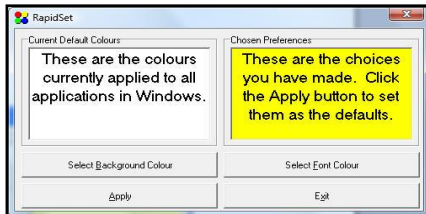
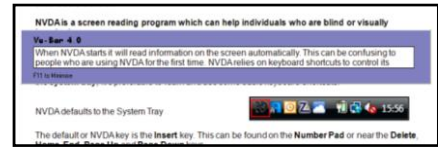
Please speak to **Student Services** at any campus or ask a member of Library staff for more information.

AccessApps – Useful Tools Available on the College Network

All these Apps are on College computers – go to **Start**, select **All Programs**, then **AccessApps**.

Vubar

Vubar provides an on-screen slotted ruler so users can read a few lines at a time. The height and width and colour of Vubar can be customised.

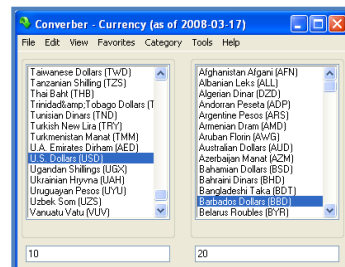


RapidSet

RapidSet is an easy-to-use program which allows you to change font and background colours in Word documents and other applications.

Converber

Converber will help you convert almost anything – weights, measurements, distance, currency and much more!

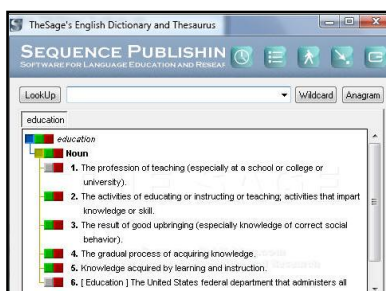
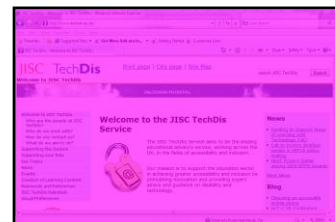


T-Bar

T-Bar shades out parts of the text onscreen and can be customised. It can help reduce visual stress.

ssOverlay

ssOverlay allows digital information to be displayed with a colour overlay or screen masking. It also helps reduce screen glare on older monitors.

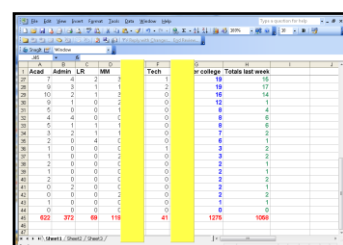


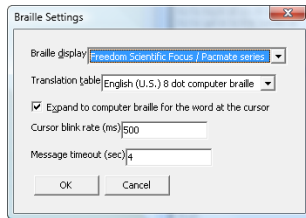
TheSage

TheSage is an advanced English dictionary and thesaurus.

Spr-Ot

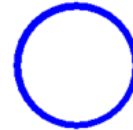
Spr-Ot blanks out sections on screens containing a lot of information. It can help track information in spreadsheets and be flipped vertically or horizontally and be resized.





NVDA (Non-Visual Display Access)

NVDA is a screen reader for blind users which provides audio navigation and text-to-speech output from a computer.



Sonar Cursor Ring

Sonar Cursor Ring provides an expanded ring around the mouse pointer for users who find it hard to locate the pointer.

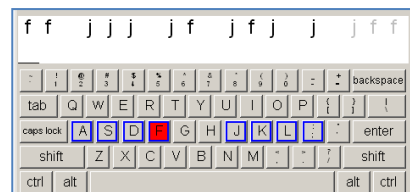


Virtual Magnifying Glass

The Virtual Magnifying Glass will magnify information on a computer screen up to 16 times. You can increase the height and width of the magnification.

TypeFaster Accessible

TypeFaster Accessible can help individuals who want to learn how to touch type. The Accessible version has been designed especially for visually impaired or blind individuals.

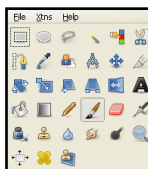


Audacity

Audacity is open source software for recording and editing sounds.

MouseTool

MouseTool can help individuals who have repetitive strain injury (RSI) or find it difficult to click the buttons on a standard mouse. It can also perform automated clicks.



GIMP

GIMP can resize, edit and crop photos and combine multiple images.

Artweaver

Artweaver records and saves the drawing process, so you can replay it later to show others your painting style or the progress from empty paper to a finished artwork.

